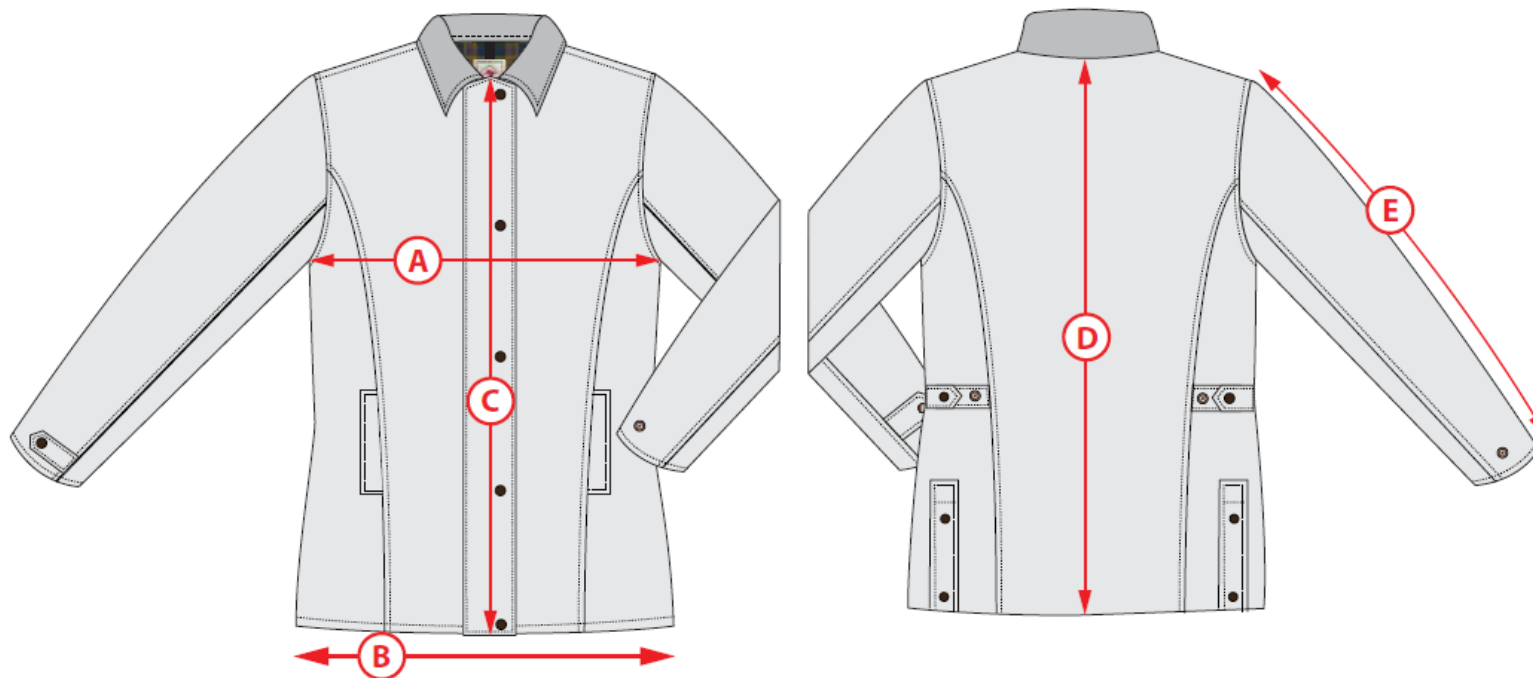


## Zipper Length

<b>Xsmall</b>	63cm	<b>Large</b>	65cm
<b>Small</b>	63cm	<b>XLarge</b>	68cm
<b>Medium</b>	65cm	<b>2XLarge</b>	68cm



REF.	MEASUREMENT POINT (ALL CM)	XS				S				M				L				XL				Grading +/-
A	Half Chest	51.9				54.4				56.9				59.4				63.15				2.5
B	Half Hem	57				59.5				61.9				64.4				68				2.5
C	Centre front length	67.2				68.2				69.2				70.2				71.2				1
D	Centre back length	72.6				73.6				74.6				75.6				76.6				1
E	Sleeve length incl cuff	63.5				64.5				65.5				66.5				67.9				1